

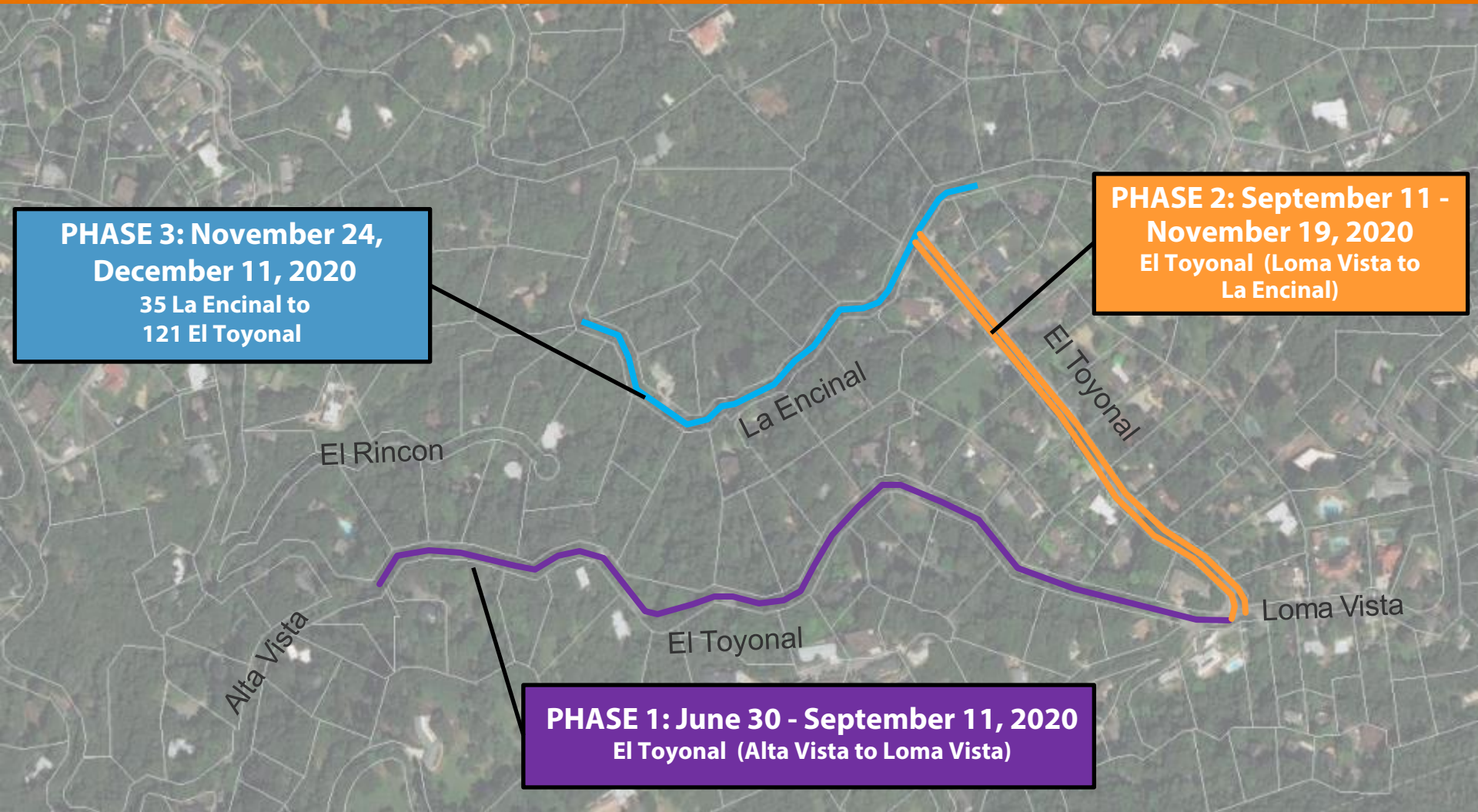
Proposed Pipe Installation Sequencing



**PHASE 3: November 24,
December 11, 2020**
35 La Encinal to
121 El Toyonal

**PHASE 2: September 11 -
November 19, 2020**
El Toyonal (Loma Vista to
La Encinal)

PHASE 1: June 30 - September 11, 2020
El Toyonal (Alta Vista to Loma Vista)



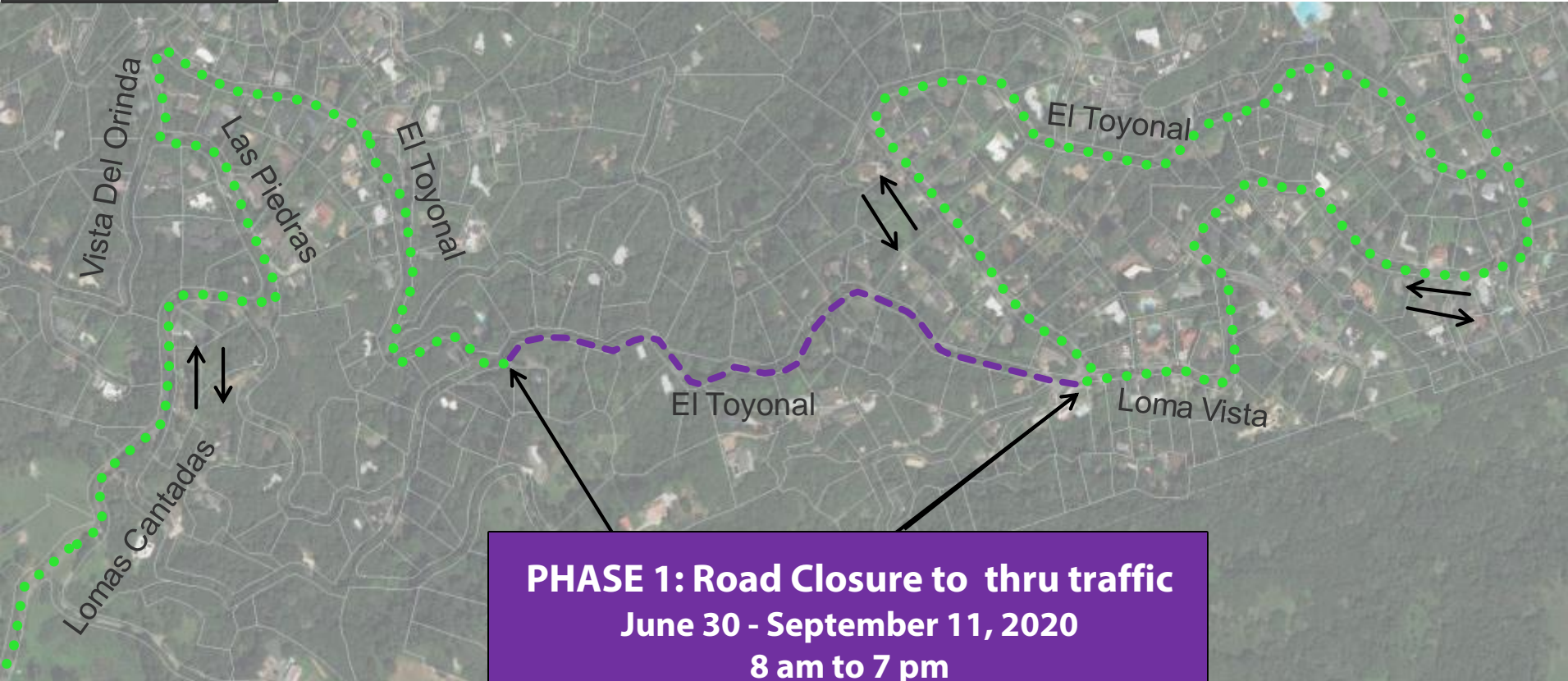
Phase 1 Road Closure

El Toyonal (Alta Vista to Loma Vista)



— Work Limits
••• Detour

To Camino Pablo, see next slide for detour continuation ↑



PHASE 1: Road Closure to thru traffic
June 30 - September 11, 2020
8 am to 7 pm
Tuesday to Friday

↓ To Grizzly Peak Blvd, see next slide for detour continuation

Phase 1 Road Closure

El Toyonal (Alta Vista to Loma Vista)

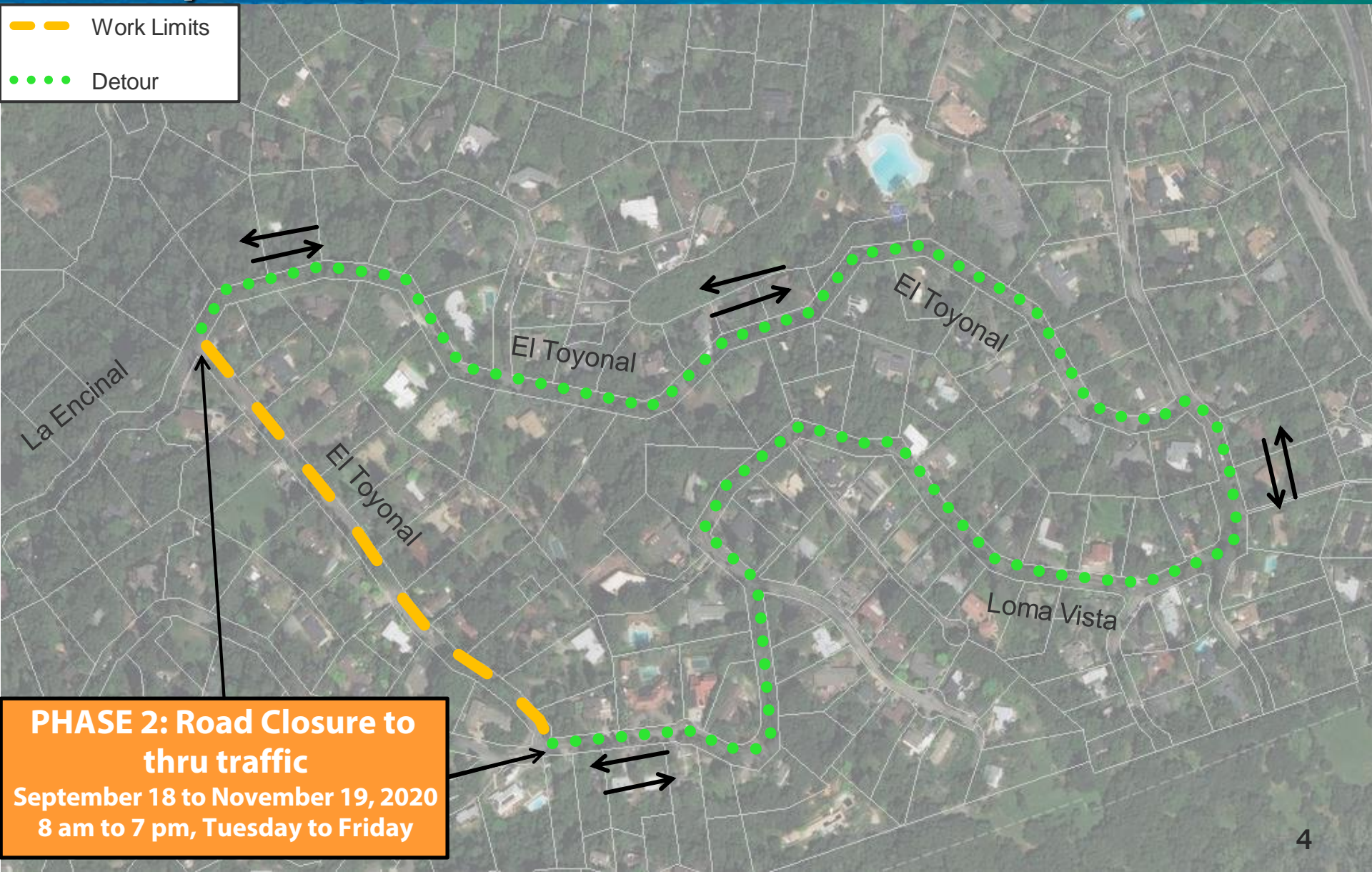


Phase 2 Road Closure

El Toyonal (Loma Vista to La Encinal)



— — — — — Work Limits
• • • • • Detour



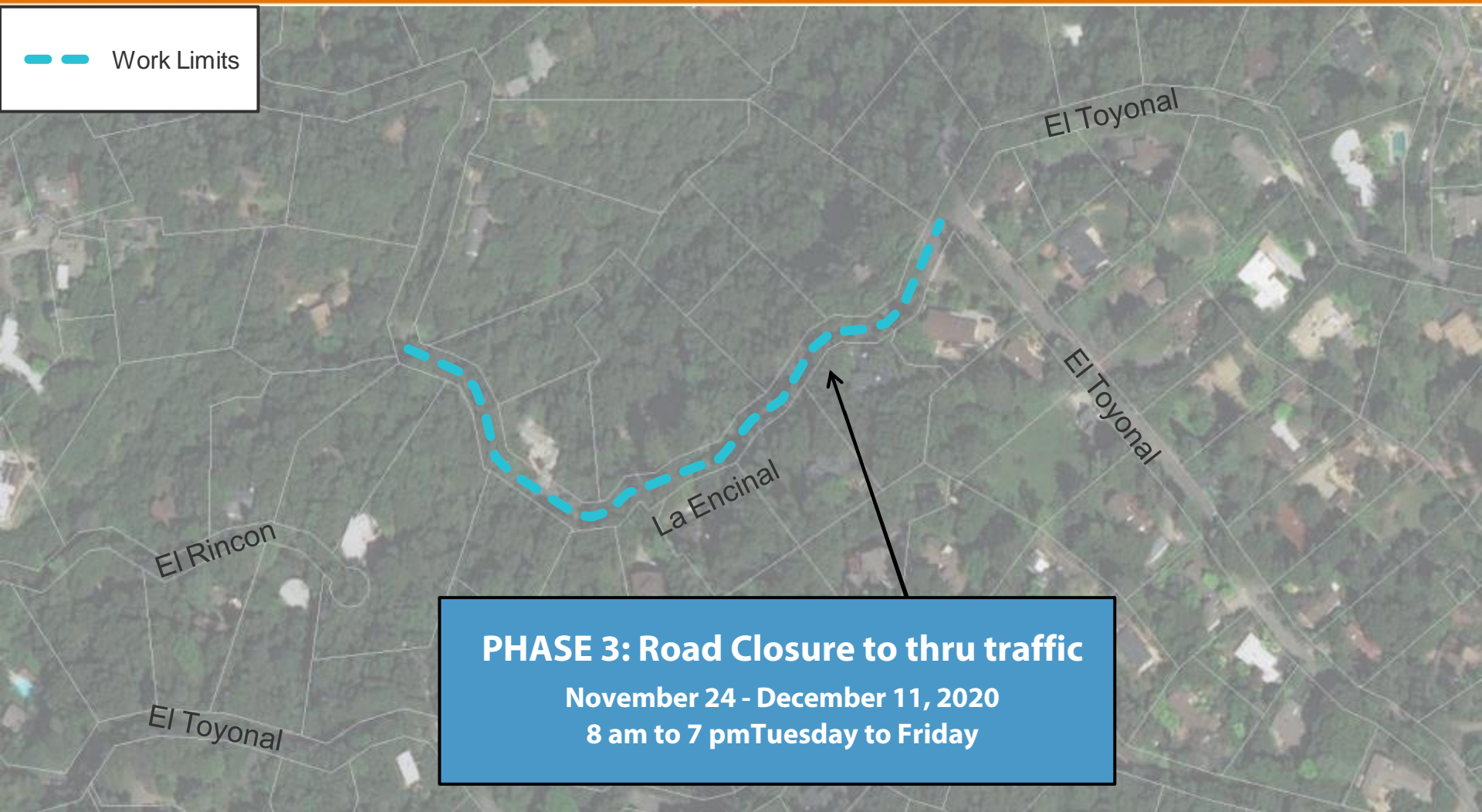
PHASE 2: Road Closure to thru traffic
September 18 to November 19, 2020
8 am to 7 pm, Tuesday to Friday

Phase 3 Road Closure

La Encinal – 35 La Encinal to El Toyonal



Work Limits



PHASE 3: Road Closure to thru traffic

November 24 - December 11, 2020

8 am to 7 pm Tuesday to Friday

Phase 3 Road Closure (Continued)

El Toyonal (La Encinal to 121 El Toyonal)



- Work Limits
- Detour

PHASE 3: Road Closure to thru traffic
November 24 - December 11, 2020
8 am to 7 pm Tuesday to Friday

